



[Watch](#) ONE-MINUTE WORLD NEWS

News Front Page



Africa
Americas
Asia-Pacific
Europe
Middle East
South Asia
UK
Business
Health
 Medical notes
Science & Environment
Technology
Entertainment
Also in the news

Video and Audio

Programmes

Have Your Say
 In Pictures
 Country Profiles
 Special Reports

Related BBC sites

Sport
 Weather
 On This Day
 Editors' Blog
 BBC World Service

Page last updated at 15:28 GMT, Friday, 18 December 2009

[E-mail this to a friend](#)

[Printable version](#)

Perfect face dimensions measured

Scientists believe they have worked out the dimensions of the most attractive female face.

They say the key to the ideal arrangement of female facial features is the measurements between the eyes, mouth and ears.

Applying their results, the Canadian pop singer Shania Twain was rated as having the perfect visage.

The study, led by the University of Toronto, appears in the journal *Vision Research*.

The researchers asked students to rate the attractiveness of colour photographs of the same woman's face, laid out side by side.

Using photoshop, the researchers altered the vertical distance between the eyes and mouth, and the horizontal distance between the eyes in each image.

The features themselves never changed, just the distance between them, and the woman's face was only compared to her own.

Following a series of experiments, the researchers came up with the most attractive length and width ratios between features.

On length, the distance between a woman's eyes and mouth should be just over a third or 36%, of the overall length of her face, from hairline to chin.

For width, they calculated that the space between a woman's pupils should be just under half, or 46%, of the width of her face from ear to ear.

Average face

Fortunately, the researchers calculated that these ratios correspond to an average face.

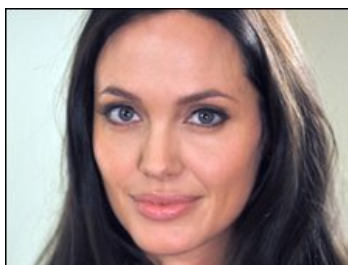
The researchers said women who did not fit the "perfect dimensions" had no need to resort to extreme measures, such as plastic surgery.

They said hairstyles could be used in effect to create an optical illusion.

Lead researcher Professor Kang Lee said the face of actress and



Shania Twain: The perfect face?



Angelina Jolie does not cut the mustard



ADVERTISEMENT

Transfer money to and from Canada at rates the banks won't match.

[Compare Us NOW](#) **CANADIANFOREX**
 FOREIGN EXCHANGE SERVICES

Great exchange rates Lower fees Open 24 hours

SEE ALSO

'Rosy glow' preferred in females
 01 Apr 09 | Health
 Declaring love boosts sex appeal
 09 Sep 08 | Health
 Gaze 'key to facial attraction'
 07 Nov 07 | Health

RELATED BBC LINKS

Facial attractiveness

RELATED INTERNET LINKS

Vision Research
 University of Toronto

The BBC is not responsible for the content of external internet sites

FROM OTHER NEWS SITES

[The Independent](#) Beauty is between eyes, mouth of the beholden: study - 7 hrs ago

[Sydney Morning Herald](#) Beauty is between eyes, mouth of the beholden - 7 hrs ago

[Telegraph](#) Scientists find formula for beautiful face - 10 hrs ago

[News24.com](#) Beauty is between eyes of beholden - 10 hrs ago

[EconomicTimes](#) Beauty is between eyes, mouth of beholden - 16 hrs ago

[About these results](#)

renowned beauty Angelina Jolie did not fit the golden ratio either for length or width.

British actress Elizabeth Hurley scored on the golden ratio for length, and just missed out the width measurement.



Elizabeth Hurley - almost there

Both were eclipsed by Shania Twain, 44, whose hits include Man! I Feel Like a Woman!

The results suggest her face has a perfect set of geometric measurements.

However, the study looked only at white women, and the researchers admit their findings could not be applied to other groups.

Professor David Perrett, of the perception lab at St Andrew's University, said the physical dimensions of a face provided a lot of clues about the health and fertility of the owner.

He said men tended to be attracted to female faces that were young and feminine - probably because they suggested heightened fertility.

But he said the distance between features was probably less important than the appearance of the features themselves.

For instance, a man was likely to be attracted by big eyes, rather than by the fact that they were a certain distance apart.

TOP HEALTH STORIES

- CJD victim 'had different gene'
- Fake blood product for soldiers
- Early treatment hope for tinnitus

News feeds

MOST POPULAR STORIES NOW

SHARED READ WATCHED/LISTENED

- Climate deal agreed in Copenhagen
- Iran troops 'seize Iraq oil well'
- Perfect face dimensions measured
- Auschwitz death camp sign stolen
- Octopus snatches coconut and runs
- Tag Heuer 'to drop Woods image'
- Heavy snowfall causes disruption
- GM to 'wind down' Saab business
- Eastern US braced for snowstorm
- Iran government 'will not last'

Most popular now, in detail

Bookmark with: [What are these?](#)

[Delicious](#) [Digg](#) [reddit](#) [Facebook](#) [StumbleUpon](#)

E-mail this to a friend

Printable version

Ads by Google

Introducing Windows® 7

Discover All the Things You Can Do with Windows 7. Learn More. Microsoft.com/Windows

Hearing Loss Facts

All about Hearing loss. The Hear the World survey. www.hear-the-world.com

Wrinkle Cream Warning

Save Yourself Money By Reading These Free Tips Before You Buy! 7MinuteLift.com/Wrinkle_Cream

FEATURES, VIEWS, ANALYSIS



The Noughties Matt Frei looks back at an unnerving decade



dot.life An attack on Twitter and mapping UK snow



Day in pictures Some eye-catching images from around the world

MOST POPULAR NOW | The most read story in Africa is: Climate deal agreed in Copenhagen

SKIP TO TOP

[PRODUCTS & SERVICES](#)

[E-mail news](#)

[Mobiles](#)

[Alerts](#)

[News feeds](#)

[Podcasts](#)

BBC © MMIX

The BBC is not responsible for the content of external internet sites.

[News Sources](#)
[About BBC News](#)

[BBC Help](#)
[Accessibility Help](#)
[Jobs](#)
[Advertise With Us](#)

[About the BBC](#)
[Contact Us](#)
[Terms of Use](#)
[Privacy & Cookies](#)